

## NetWaySP8C7W2

### 8-port Hardened PoE+ Switch, Integral Power with Rapid Battery Charger



Altronix NetWaySP8C3WP5 supports up to 60W per port (360W total power) for deploying the latest high-powered IP devices in remote locations. It is equipped with two (2) 1Gb SFP ports to transmit data at long distances and eight (8) PoE+ (30W) or two (2) Hi-PoE (60W) Ethernet ports. NetWaySP8C3WP5 accommodates single/multi-mode fiber cable to deliver data from NetWay Spectrum head-end media converters/injectors. NetWaySP8C7W2 has an integrated rapid battery charger for extended battery run times. Embedded LINQ Technology allows to monitor, control, and report power and diagnostics from anywhere.



NetWaySP8C7W2

### Key Features

- Eight (8) PoE/PoE+ (up to 30W) ports or two (2) Hi-PoE (60W) ports (360W total power)
- IEEE 802.3af, 802.3at compliant or Hi-PoE (60W)
- Two (2) Gigabit SFP ports
- LINQ Technology:
  - Remote network management allows for camera/device reset and diagnostic monitoring
  - Provides local and/or remote access to critical information via LAN/WAN
  - Email and Windows Dashboard Alert notifications report real-time events
  - Event log tracks history
- VLAN (Virtual Local Area Networks) subnetwork allows for the grouping together of devices for improved network traffic and higher security
- Integrated rapid battery charger for extended battery run times
- Selectable charging circuit 2A or 4A
- CE European Conformity
- NEMA 4/4X, IP66-11 enclosure accommodates batteries

### Accessories (included)



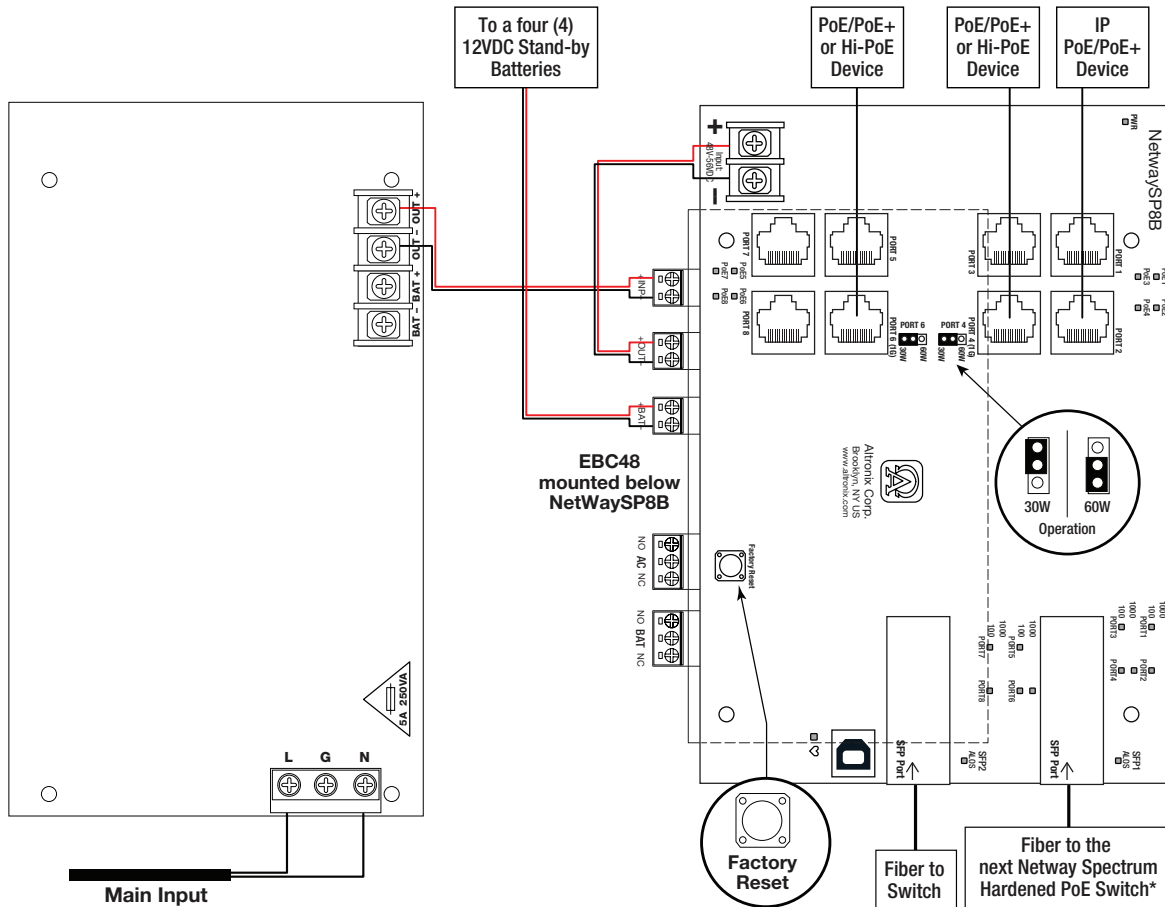
Vent2

#### Vent2 - Air Vents For NEMA4/4X Rated Enclosures

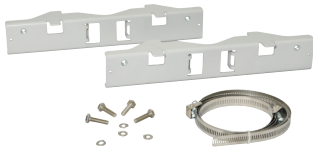
Two (2) Fiberglass, smooth matte finish vents included with hardware and template

#### Lifetime Warranty

### Typical Application



### Accessories (order separately)



#### PMK2 - Pole Mount Kit

PMK2 pole mount kit is designed to simplify installation of outdoor units. It accommodates 2" - 8" (diameter) poles.



#### SFP Modules - Hot pluggable Transceivers

- P1MM** Multi-Mode SFP Module for distances up to 550m.
- P1SM10** Single-Mode SFP Module for distances up to 10km.
- P1AB2K** Single Strand SFP Module for distances up to 2km.
- P1GCE** Copper SFP Module for distances up to 100m.



#### NetWaySP1A - Ethernet over Fiber Media Converter/Repeater for Applications Requiring an Additional SFP (Fiber) Port

NetWaySP1A PoE powered media converter/repeater converts 10/100/1000 Mbps to Fiber (1000Base-X/SX/LX).

### Lifetime Warranty



## NetWaySP8C7W2

8-port Hardened PoE+ Switch, Integral Power with Rapid Battery Charger



### Specifications

#### Input

Voltage	230-277VAC, 50/60Hz, 1.75A
Input Fuse	5A/250V

#### Power Output

Maximum Power	Eight (8) PoE+ (30W) ports or two (2) Hi-PoE (60W) ports, 360W total power IEEE 802.3af (15W), IEEE 802.3at (30W) compliant Integral surge protection
---------------	--

#### SFP Ports:

Two (2) Gigabit SFP ports

#### Ethernet Ports:

Six (6) 100 Mbps full duplex only (ports 1, 2, 3, 5, 7 and 8) and two (2) 10/100/1000 Mbps ports  
Connectivity: RJ45, auto-crossover  
Wire type: 4-pair CAT5e or higher structured cable  
Speed: 10/100/1000 Mbps, half/full duplex, auto negotiation

#### Battery Charging:

Selectable 2A or 4A charging circuit  
Able to recharge 32AH or larger batteries in under 8 hours  
Low battery and battery presence supervision  
AC Fail supervision

#### Failover

Upon AC loss, instantaneous

Batteries are sold separately. Vent2 Ventilation Kit is included

#### Indicators (LED)

Individual PoE On LEDs for each port  
Individual IP Link status, 10/100/1000 Base-T/active LEDs for each port  
ALOS LED indicates fiber connection for SFP port  
Heartbeat LED indicates proper operation of the unit

#### VLAN:

Multiple management VLAN assignment  
802.1Q Tagged VLAN  
Up to 10 VLAN groups. ID Range 2-4095

#### LINQ Technology:

Remote network management allows for camera/device reset and diagnostic monitoring  
Provides local and/or remote access to critical information via LAN/WAN  
Email and Windows Dashboard Alert notifications report real-time events  
Event log tracks history

#### Agency Listings

CE European Conformity

#### Physical and Environmental

##### Dimensions (H x W x D)

Enclosure:	17.53" x 15.3" x 6.67" (445.3mm x 388.6mm x 169.4mm)
Shipping:	21.375" x 14.5" x 9.5" (542.9mm x 374.7mm x 241.3mm)

NEMA 4/4X, IP66-11 Rated enclosure for outdoor use  
Accommodates four (4) 12VDC/4AH batteries (48V of backup)

##### Weight (approx.)

Product:	15 lb. (6.8 kg)
Shipping:	17.5 lb. (7.9 kg)

##### Temperature

Operating (360W):	-30°C to 65°C (-22°F to 149°F)
Operating (240W):	-30°C to 70°C (-22°F to 158°F)
Storage	-30°C to 85°C (-22°F to 185°F)

Relative Humidity: 85% +/- 5%

BTU/Hr. (approx.): 183 BTU/Hr.

Operating Altitude: -304.8 to 2,000m

#### Lifetime Warranty

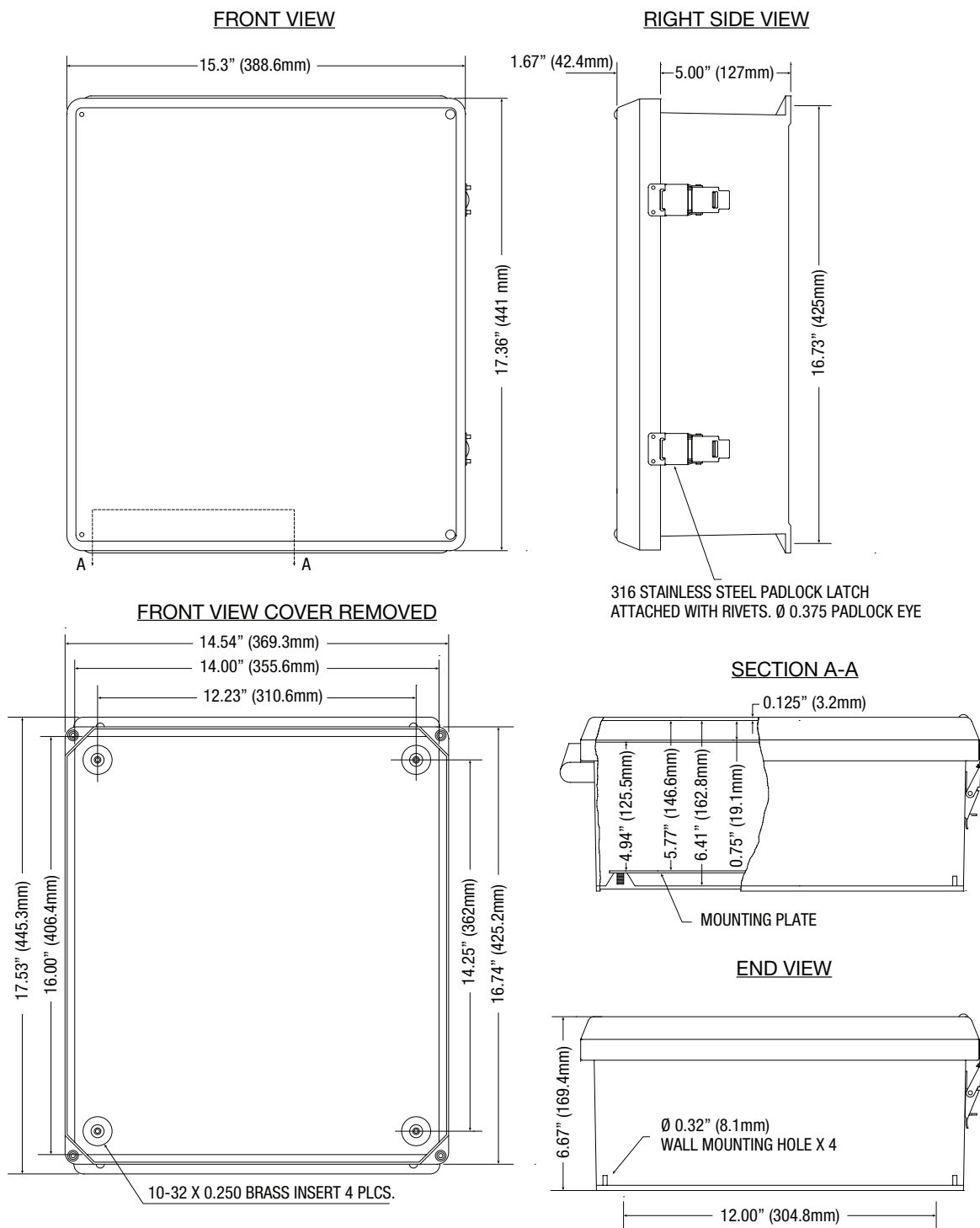
Altronix Corporation | 140 58th St | Brooklyn, NY 11220 USA

phone: +1 718.567.8181 | fax: +1 718.567.9056 | email: info@altronix.com | www.altronix.com

### Dimensions and Drawing

Dimensions (H x W x D approximate)

17.53" x 15.3" x 6.67" (445.3mm x 388.6mm x 169.4mm)



### Lifetime Warranty

Altronix Corporation | 140 58th St | Brooklyn, NY 11220 USA

phone: +1 718.567.8181 | fax: +1 718.567.9056 | email: info@altronix.com | www.altronix.com