

Pace1KLDC

10Base-T1L, IEE 802.3cg Ethernet Media Adapter



Altronix Pace1KLDC is a SPE (Single Pair Ethernet) media converter/adapter that enables connecting 10Base-T1L, IEE802.3cg compliant devices such as Security/Industrial/BMS/Elevators/HVAC Controllers and sensors, etc. to an Ethernet network. Long distance headend to remote-end device cabling can be achieved to over 1km (1,000m, 3,280 ft.).

In addition to new SPE (UTP) Ethernet network installations, upgrading of legacy networks, i.e. LONworks, RS485, 4-20mA Control Loops, etc. can be achieved by using the existing two wire cabling, thus saving rip-out & reinstallation costs.

Operationally, the Pace1KLDC is powered via 12/24VDC or 12/24VAC at the headend, ethernet connection to the switch transmitting network data (10BaseT), and single pair Ethernet connection up to 1km (1,000m, 3,280 ft.) to the remote T1L device.



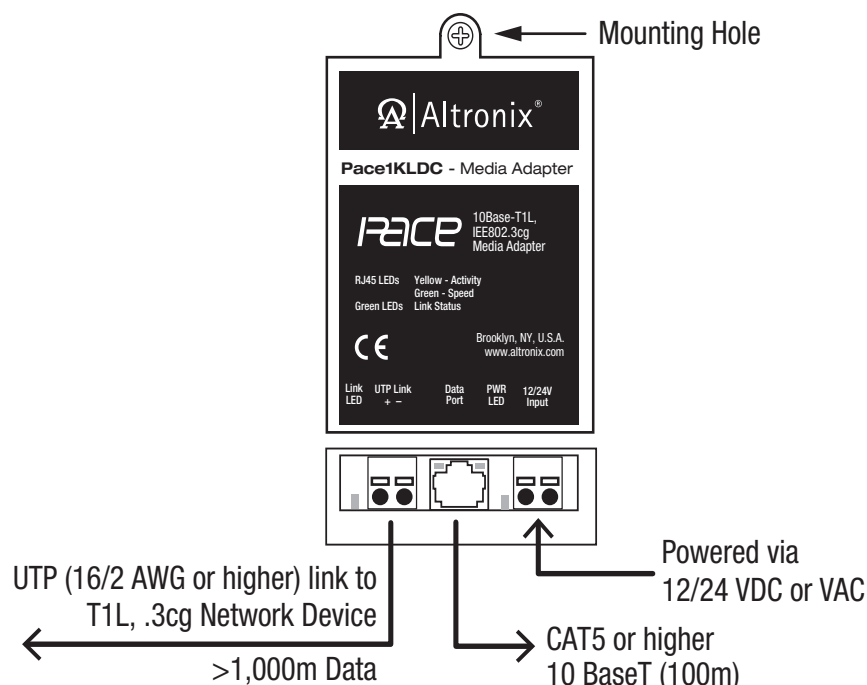
Pace1KLDC

For adapter powered via POE midspan/endspan, see model Pace1KLDC

Key Features

- Provides SPE (single pair Ethernet) over UTP (twisted pair) or 16/2 AWG or higher wire up to 1km (3,280 ft.)
- Utilize a single pair for new installations or retrofit of IP devices over existing single pair infrastructure.
- SPE Two Wire port: 10Base-T1L, IEE802.3cg protocol 10Mbps
- Ethernet/Data port (10BaseT)
- Extends Network link distance in an industrial environment
- Building Automation, Surveillance & Security, BMS & HVAC, Elevators
- CE European Conformity
- Lifetime Warranty

Typical Application Diagram



Lifetime Warranty

Specifications

Input

Powered via 12/24VDC or 12V/24VAC

SPE (Single Pair Ethernet) over UTP or 16/2 AWG or Higher Link

Wire type: Twisted pair (2-wire, UTP)

Distance: 1km (1,000m, 3,280 ft.) @ 10Mbps

Ethernet/Data Port

Connectivity: RJ45, auto-crossover

Wire type: 4-pair CAT5e or higher

Distance: up to 100m

Speed: 10 BaseT, half/full duplex, auto negotiation

Indicators (LED)

Green LED: Data transmission (link) over SPE

Red LED: Power (12/24VDC)

Yellow and Green LED (by RJ45 jack):

IP Link status, 10Base-T/active

Agency Listings

CE

European Conformity

Physical and Environmental

Dimensions (W x L x H)

Enclosure: 2.5" x 3.8" x 1" (63.5mm x 96.5mm x 25.4mm)

Shipping: 8" x 6" x 5" (203.2mm x 152.4mm x 127mm)

Weight (approx.)

Product: 0.22 lb. (0.1 kg)

Shipping: 0.4 lb. (0.18 kg)

Temperature

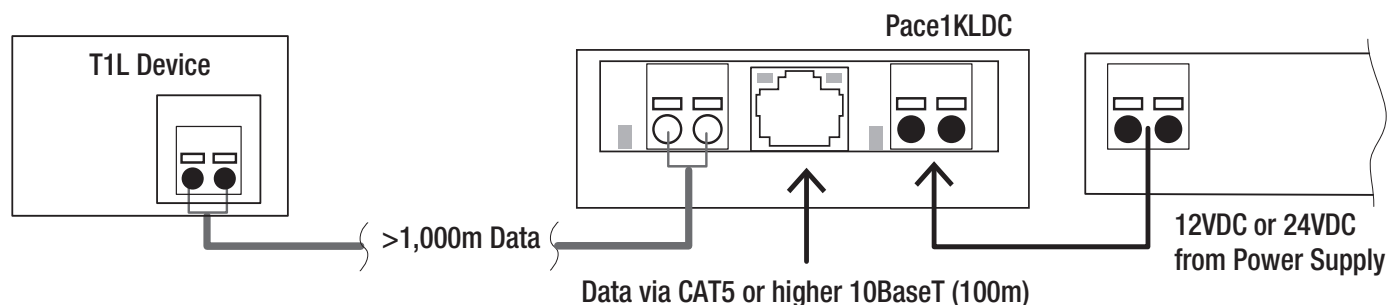
Operating: - 40°C to 75°C (- 40° to 167°F)

Storage: - 40°C to 75°C (- 40° to 167°F)

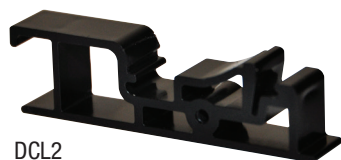
Relative Humidity 85% +/- 5%

Operating Altitude - 304.8 to 2,000m

Typical Operation Diagram



Accessories



DCL2 - DIN Rail Mounting Clip

Allows for easy installation of Altronix adapters utilizing screw mounting holes to mount on a standard DIN rail (Altronix Din Rail models D10, D12, D19, or D24).

Lifetime Warranty

Altronix Corporation | 140 58th St | Brooklyn, NY 11220 USA

phone: +1 718.567.8181 | fax: +1 718.567.9056 | email: info@altronix.com | www.altronix.com