

Trove1SH1R Access & Power Integration Solution

SOFTWARE HOUSE

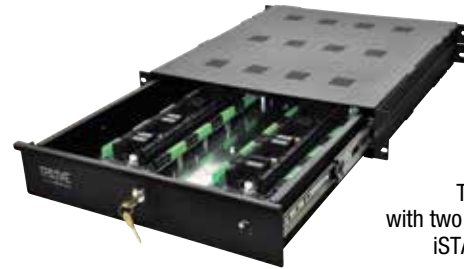
Description

Altronix Trove™ rack enclosure and backplane let you easily integrate Altronix power with Software House access controllers and accessories. Trove simplifies board layout and wire management, reduces installation time and labor costs.



* Boards not included

Trove1SH1R with Altronix power supply and sub-assemblies and one (1) Software House iSTAR Ultra ACM



Trove1SH1R with two (2) Software House iSTAR Ultra ACMs

Trove1R Enclosure + TSH1R Backplane Features

- Accommodates the following Software House controllers with or without Altronix power/accessories:
 - Up to two (2) iStar Ultra ACM or two (2) iStar ACM SE/PRO ACM.
 - Up to six (6) I8, R8 expansion modules.
 - Altronix Power Supplies;
 - Altronix Sub-Assemblies.
- Includes Altronix Trove1R Rack Enclosure and one (1) removable TSH1R backplane.

Agency Listings

CE European Conformity.

Features

- Power status LED for use where power and access control boards share the same enclosure.
- Simplifies board layout and wire management.

Features (cont'd)

- Convenient knockout configuration:
 - Six (6) 1.25" diameter knockouts located on the back of enclosure.
- 2U drawer on extendable rails.
- Included Z Bracket facilitates ease of wiring.
- Black powder coated steel enclosure.
- Includes cam lock, tamper switch, IEC320 connector and mounting hardware.

Dimensions (H x W x D):

Modular 2U standard EIA 19" rack mount chassis.
3.25" x 19.0" x 26.5" (82.6mm x 482.6mm x 673.1mm).

Weights:

Product - 18 lbs. (8.16 kg)
Shipping - 23 lbs. (10.43 kg)

TSH1R Backplane Features

- Accommodates the following Software House controllers with or without Altronix power/accessories:
 - Up to two (2) iStar Ultra ACM or two (2) iStar ACM SE/PRO ACM.
 - Up to six (6) I8, R8 expansion modules.
 - Altronix Power Supplies;
 - Altronix Sub-Assemblies.

Dimensions (H x W x D):

18.5" x 15.25" x 0.375" (469.9mm x 387.4mm x 9.5mm).

Weights:

Product - 4.5 lbs. (2.04 kg)
Shipping - 5.2 lbs. (2.36 kg)

Optional Accessories

RE2:

Rack Mount Battery Enclosure accommodates up to four (4) 12VDC/7AH batteries.

WM5, WM25, WM100:

Magnetic Cable Tie Mounts (5, 25, 100 counts).

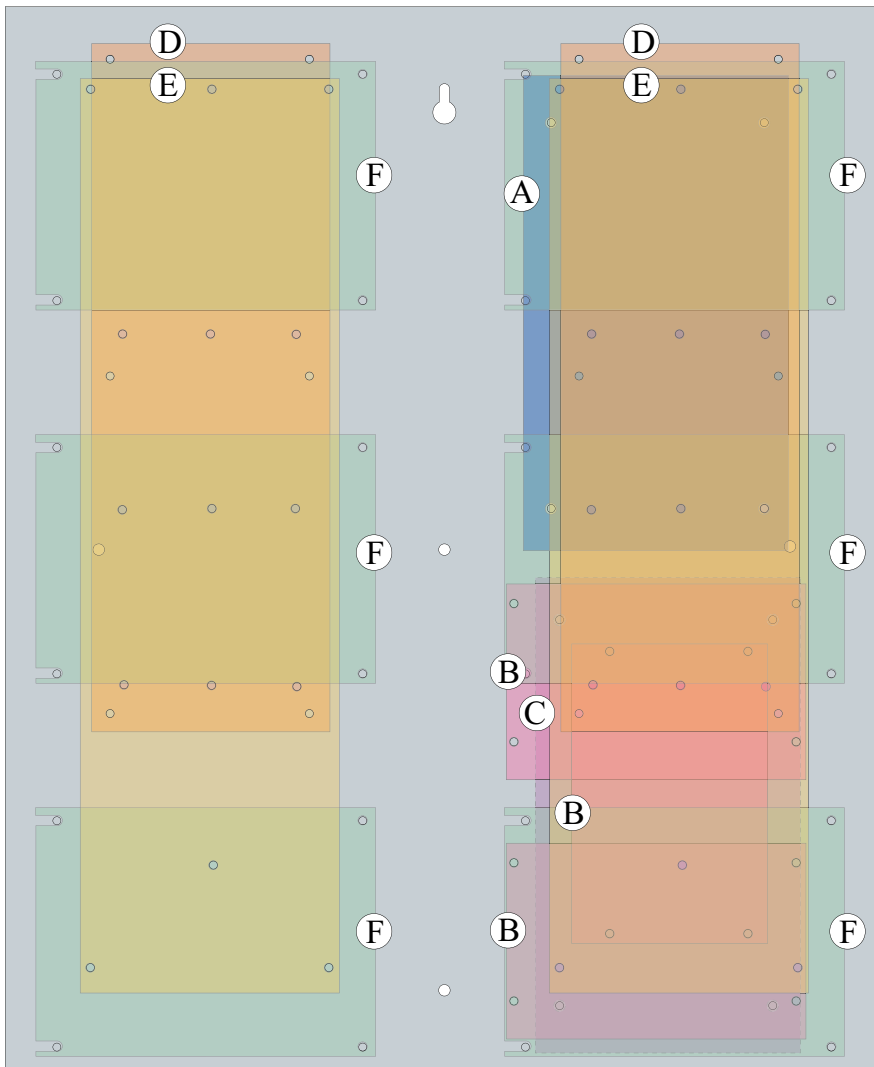
LC3:

6 ft. three-wire line cord.

TSH1R
Access & Power Integration Solution

Access Controller Position Chart for the Following Models:

Altronix / Software House	Pem Mounting
AL400ULXB2, AL400ULXB2V, AL600ULXB, AL600ULXBV, AL1012ULXB, AL1012ULXBV, AL1024ULXB2, AL1024ULXB2V, eFlow4NB, eFlow4NBV, eFlow6NB, eFlow6NBV, eFlow102NB, eFlow102NBV, eFlow104NB, eFlow104NBV	(A)
ACM4, ACM4CB, LINQ8PD, LINQ8PDCB, MOM5, PD4UL, PD4ULCB, PD8UL, PD8ULCB, PDS8, PDS8CB	(B)
ACM8, ACM8CB, ACMS8, ACMS8CB, LINQ8ACM, LINQ8ACMCB	(C)
iStar Ultra ACM SE, iStar Pro ACM	(D)
iStar Ultra ACM	(E)
i8, r8	(F)



Trove1SH1R Access & Power Integration Solution

