

WP2SPX

NEMA Rated Outdoor Power Supply/Battery Enclosure

Altronix WP2SPX is a UL Listed, NEMA 4/IP 66 Rated outdoor power supply/battery and accessory enclosure with a metal backplane and battery shelf. It can accommodate a wide variety of Altronix power supplies, sub-assemblies, and other accessories.



WP2SPX

Specifications

Features

- Hot compression molded, halogen free, self extinguishing fiberglass reinforced polyester
- Stainless steel continuous hinge and stainless steel padlockable latches
- Integral flanges simplify wall or pole mounting
- Includes metal backplane for mounting power and accessories
- Includes battery shelf

Capacity

- Enclosure accommodates two (2) 12VDC/7AH or up to four (4) 12VDC/4AH batteries

Agency Listings

- UL Listed Enclosure
- CE European Conformity

Physical and Environmental

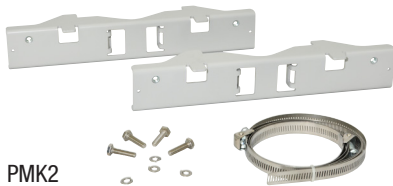
Dimensions (H x W x D)

- Enclosure: 17.53" x 15.3" x 6.67" (445.3mm x 388.6mm x 169.4mm)
- Shipping: 21.375" x 14.5" x 9.5" (542.9mm x 374.7mm x 241.3mm)

Weight (approx.)

- Product: 10 lb. (4.54 kg)
- Shipping: 11.5 lb. (5.22 kg)

Accessories (order separately)



PMK2

PMK2 - Pole Mount Kit

PMK2 pole mount kit is designed to simplify installation of outdoor units. It accommodates 2"- 8"(diameter) poles.

Kit includes:

- Two (2) powder coated steel mount brackets
- Four (4) stainless steel bolts and lock washers
- Two (2) wormgear quick release straps



Mounting Magnet


MM4, MM8, MM12, MM24 - Magnetic Mounting Solution

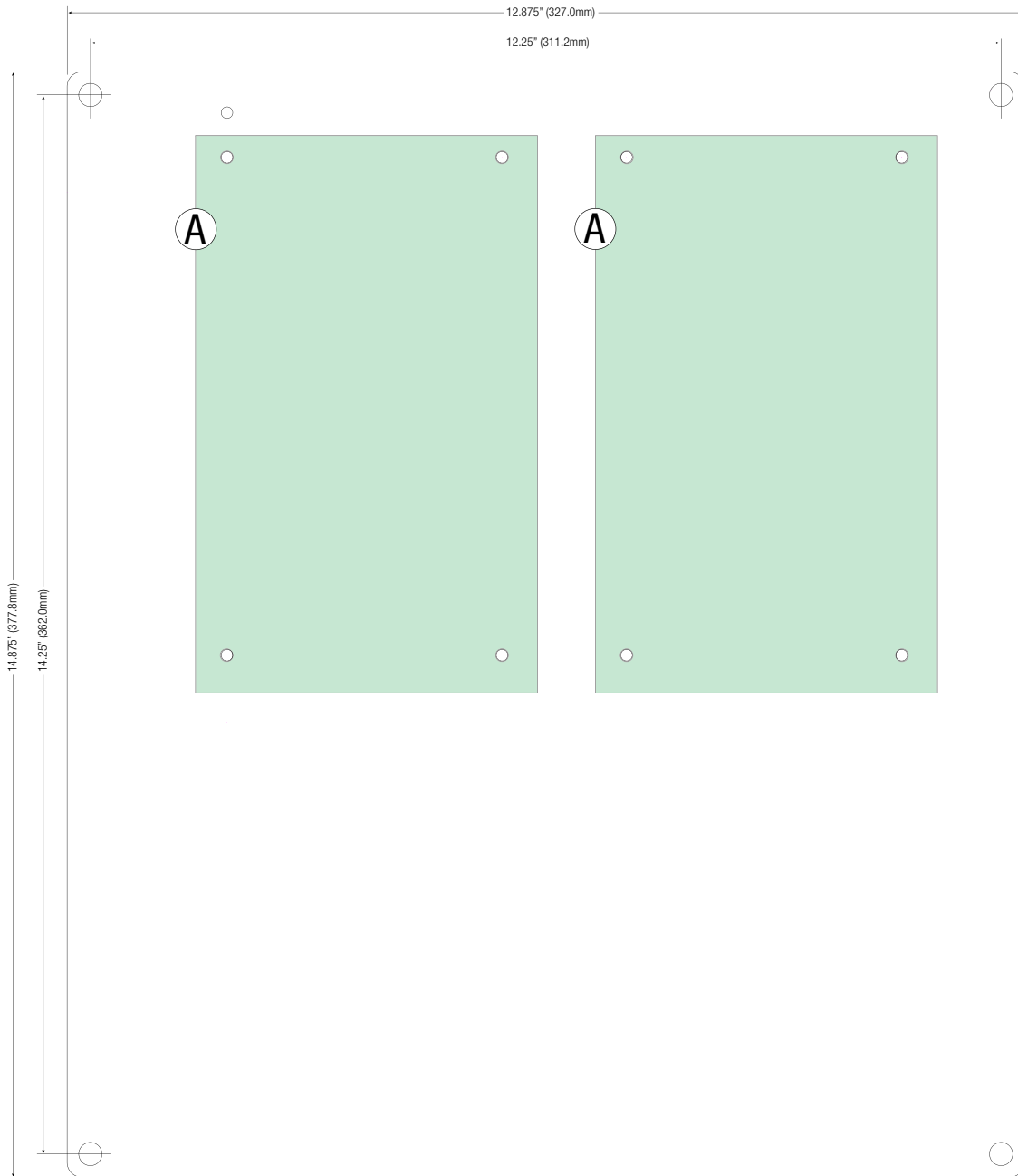
Altronix mounting magnets accommodate screws and nylon standoffs to allow for mounting various boards/ accessories in any metal enclosure or backplane.

WP2SPX

NEMA Rated Outdoor Power Supply/Battery Enclosure

Product Position Chart for the Following Models:

Altronix Products	Mounting
ACM8, ACM8CB, ACMS8, ACMS8CB, AL300ULXB, AL400ULXB2, AL600ULXB, AL1012ULXB, AL1024ULXB2, eFlow3NB, eFlow4NB, eFlow6NB, eFlow102NB, eFlow104NB, LINQ8ACM, LINQ8ACMCB, OLS75, OLS120, OLS120D2, OLS180, OLS250, PoE60, PoE200, PoE201, PoE240	



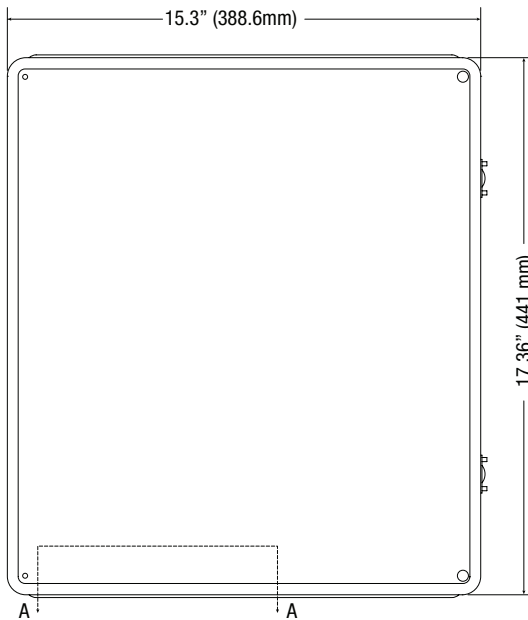
WP2SPX

NEMA Rated Outdoor Power Supply/Battery Enclosure

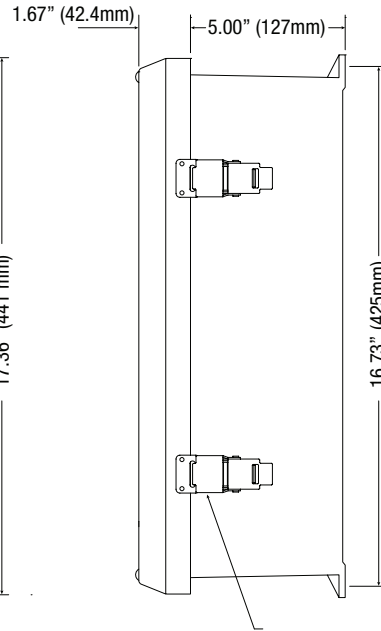
Dimensions (H x W x D approximate) and Drawing

17.53" x 15.3" x 6.67" (445.3mm x 388.6mm x 169.4mm)

FRONT VIEW

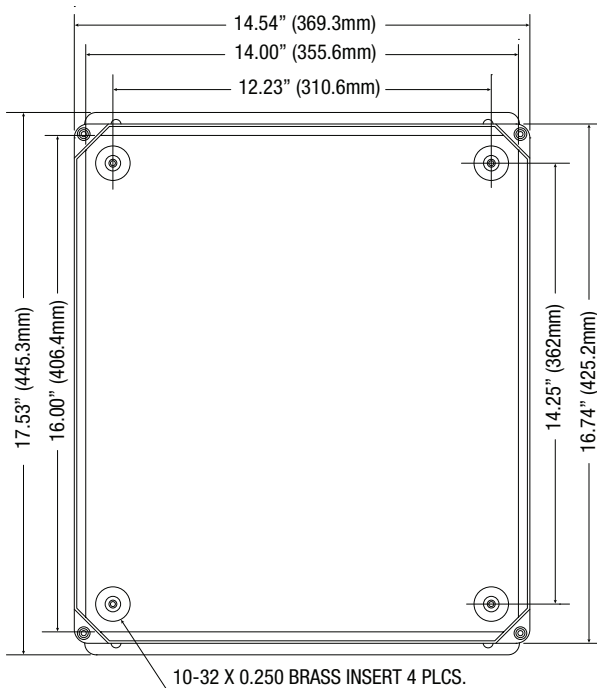


RIGHT SIDE VIEW



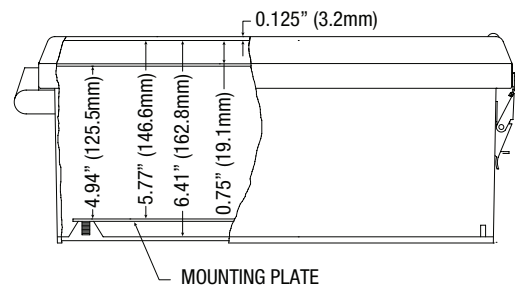
316 STAINLESS STEEL PADLOCK LATCH
ATTACHED WITH RIVETS. Ø 0.375 PADLOCK EYE

FRONT VIEW COVER REMOVED



10-32 X 0.250 BRASS INSERT 4 PLCS.

SECTION A-A



END VIEW

