

SMP10WP24

High Current

Outdoor Power Supply/Charger

-24VDC @ 10A.

Installation Guide



More than just power.™

Rev. 013023

Installing Company: _____ Service Rep. Name: _____

Address: _____ Phone #: _____

Table of Contents:

Overview	pg. 3
Specifications	pg. 3
Installation Instructions	pg. 3
Suggested Locations for Wire Entries	pg. 4
LED Diagnostics	pg. 6
Terminal Identification	pg. 6
Wall Mount Installation	pg. 7
Pole Mounting Using Optional Pole Mount Kit PMK1	pg. 7
Enclosure Drawing and Dimensions	pg. 8

Overview:

Altronix SMP10WP24 is a 10A @ 24VDC, NEMA4 rated outdoor power supply. It is designed to be mounted outdoors to reduce installation and wiring costs while increasing efficiency and reliability to provide the power needed by the most demanding security and access control applications. Unit's unique NEMA 4/IP65 rated enclosure allows installation right at the outdoor equipment it is designed to power.

Specifications:

Input:

- 115VAC 50/60Hz, 1.9A.

Output:

- 24VDC output
- 10A continuous supply current.
- Filtered and electronically regulated output.
- Short circuit and thermal overload protection.

Visual Indicators:

- AC and DC power LED indicators.

Battery Backup:

- Built-in charger for sealed lead acid or gel type batteries.
- Maximum charge current 700mA.
- Automatic switch over to stand-by batteries when AC fails (zero voltage drop).
- Battery leads included.

Enclosure Dimensions (H x W x D):

12" x 8" x 6" (304.8mm x 203.2mm x 152.4mm).

Installation Instructions:

SMP10WP24 should be installed in accordance with The National Electrical Code and all applicable Local Regulations.

1. Remove back plate inside enclosure by removing the four (4) mounting screws (*Fig. 2, pg. 5*).
2. Mark and drill desired knockouts on the enclosure to facilitate wiring (*Fig. 1, pg. 4*).
3. Secure back plate inside enclosure with the four (4) mounting screws (*Fig. 2, pg. 5*).
4. Unit can be wall or pole mounted.

Wall Mount:

- Mark and drill holes to line up with the top and bottom holes of the enclosure flange.
- Secure enclosure with appropriate fasteners (*Fig. 3, pg. 7*).

Pole Mount:

- Refer to the detailed pole mount instructions (*pg. 7*).

Secure enclosure to earth ground.

5. Slide [Power ON/OFF] switch to OFF position (*Fig. 1, pg. 2*).
6. Connect AC power to the terminals marked [L & N], connect ground to the terminal marked [G]. Use 18 AWG or larger for all power connections (Battery, DC output, AC input). Use 22 AWG to 18 AWG for power limited circuits (AC Fail/Low Battery reporting).

Keep power-limited wiring separate from non power-limited wiring (115VAC, 60Hz Input, Battery Wires). Minimum 0.25" spacing must be provided.

CAUTION: Do not touch exposed metal parts.

Shut branch circuit power before installing or servicing equipment.

There are no user serviceable parts inside.

Refer installation and servicing to qualified service personnel.

7. Slide [Power ON/OFF] switch to ON position (*Fig. 1, pg. 2*).
8. Measure output voltage before connecting devices. This helps avoiding potential damage.
9. Slide [Power ON/OFF] switch to OFF position (*Fig. 1, pg. 2*).
10. Connect devices to be powered to the terminals marked [- DC +].
When the use of stand-by batteries is desired, they must be lead acid or gel type.
11. Connect two (2) 12VDC batteries to the terminals marked [- BAT +] (battery leads included).
Note: When batteries are not used, a loss of AC will result in the loss of output voltage.
12. Slide [Power ON/OFF] switch to ON position (*Fig. 1, pg. 2*).

Fig. 1

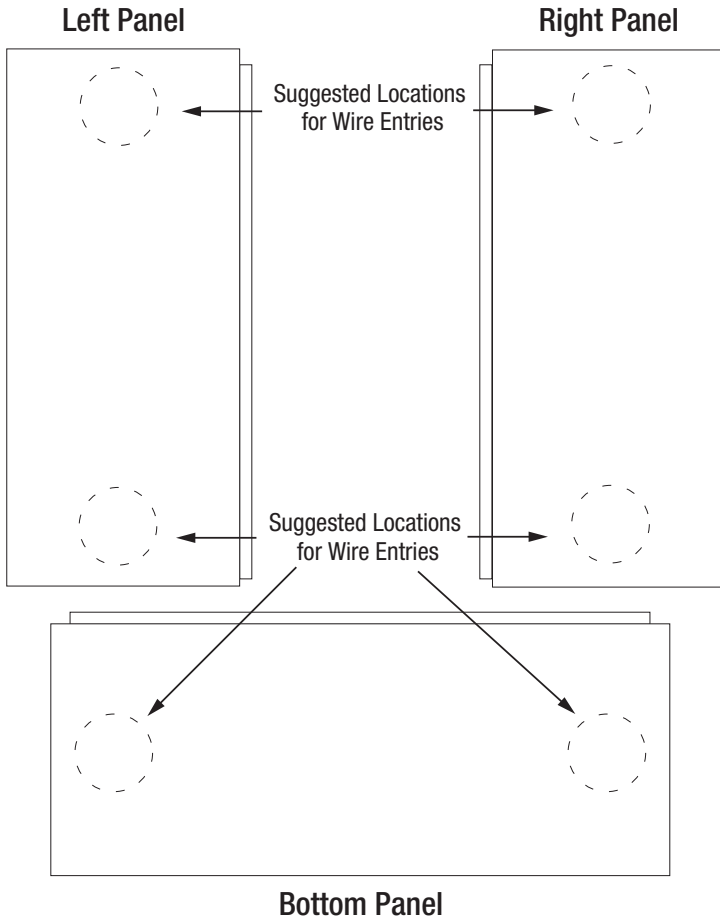
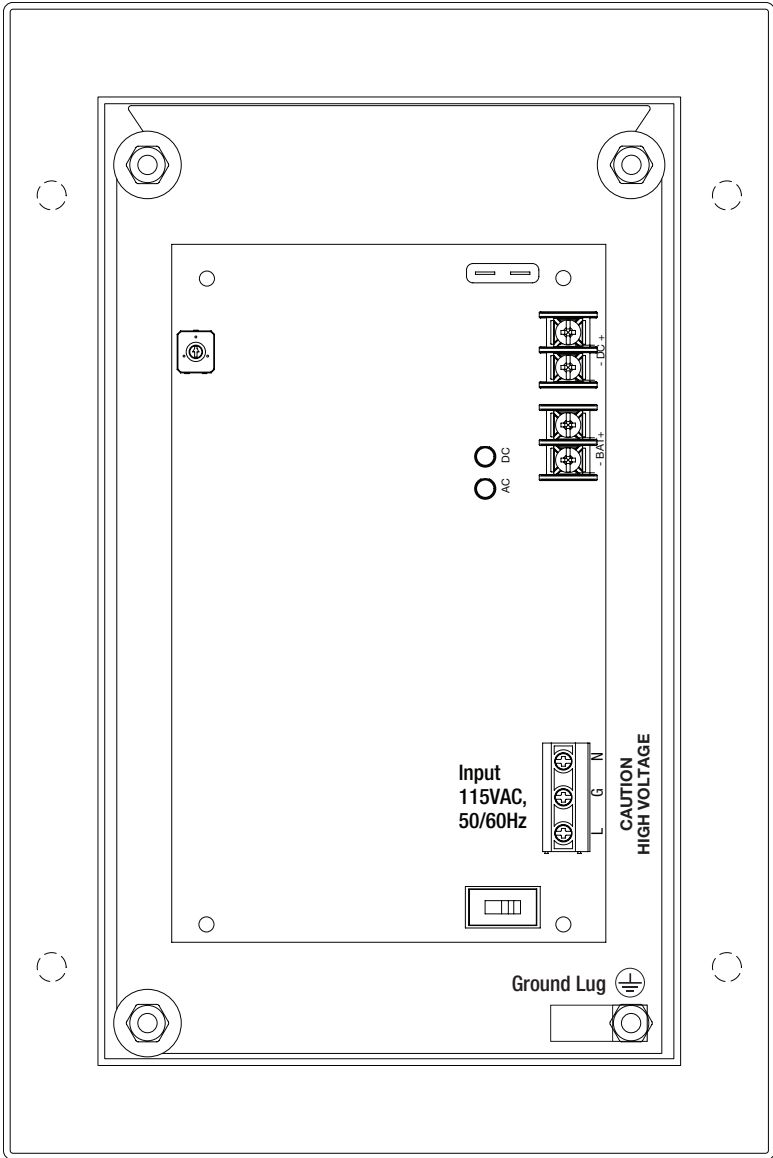


Fig. 2 - SMP10WP24



LED Diagnostics:

Red (DC)	Green (AC)	Power Supply Status
ON	ON	Normal operating condition.
ON	OFF	Loss of AC. Stand-by battery is supplying power.
OFF	ON	No DC output. Short circuit or thermal overload condition.
OFF	OFF	No DC output. Loss of AC. Discharged or no battery present.

Terminal Identification:

Terminal Legend	Function/Description
L, G, N	Connect 115VAC to these terminals: L to Hot, N to Neutral, G to ground.
- DC +	24VDC @ 10A continuous supply current.
- BAT +	Stand-by battery connections. Maximum charge rate 0.7A.



The lightning flash with arrowhead symbol within an equilateral triangle is intended to alert the user to the presence of an insulated DANGEROUS VOLTAGE within the product's enclosure that may be of sufficient magnitude to constitute an electric shock.



The exclamation point within an equilateral triangle is intended to alert the user to the presence of important operating and maintenance (servicing) instructions in the literature accompanying the appliance.



CAUTION
RISK OF ELECTRIC SHOCK
DO NOT OPEN

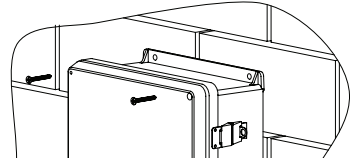


CAUTION: To reduce the risk of electric shock do not open enclosure. There are no user serviceable parts inside. Refer servicing to qualified service personnel.

Wall Mount Installation

- 1- Place unit at desired location and secure with mounting screws (not included) (Fig. 3, pg. 7).

Fig. 3



Pole Mounting Using Optional Pole Mount Kit PMK1 (not included):

This installation should be made by qualified service personnel. This product contains no serviceable parts. PMK1 is intended for use with Altronix outdoor rated power supplies or accessories housed in WP1, WP3 and WP4 enclosures. Brackets are designed for use with the Wormgear Quick Release Straps (two included).

1. Thread one (1) wormgear quick release strap through the slots on the back of a mounting bracket (Fig. 4, pg. 7).
2. Once the desired height of the top Pole Mount bracket is achieved, tighten the straps down by sliding open end of the strap through the locking mechanism on the strap, then tighten the screw with flat head screwdriver or 5/16" hex socket driver (Fig. 5, pg. 7 and Fig. 7, pg. 7).

Fig. 4

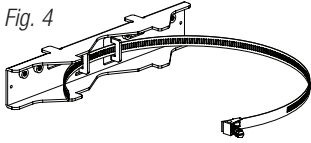


Fig. 5

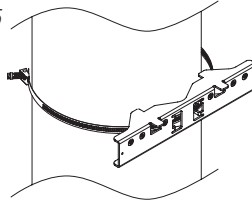
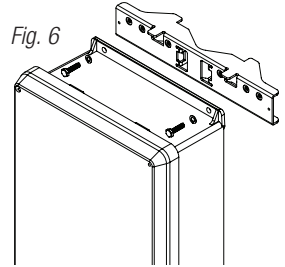


Fig. 6



3. Attach the bottom bracket to the enclosure by inserting bolts through the flange of the enclosure and into the bracket, tightening bolts with a 7/16" hex socket (Fig. 6, pg. 7).
4. Thread the second wormgear quick release strap through the slots on the back of the bottom mounting bracket (Fig. 5, pg. 7).
5. Mount enclosure onto the top bracket by inserting bolts through flange of the enclosure and into the bracket, tightening bolts with a 7/16" hex socket (Fig. 6, pg. 7).
6. Tighten the straps of the bottom bracket down by sliding the open end of the strap through the locking mechanism on the strap, then tighten screw with flat head screwdriver or 5/16" hex socket driver (Fig. 7, pg. 7).
7. Clip excess straps.

Fig. 7

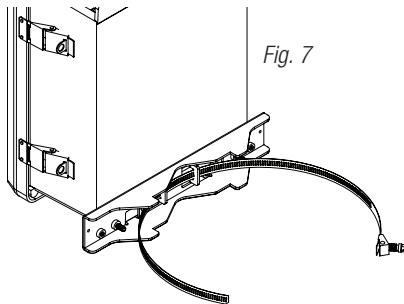


Fig. 8
2" to 8" (50.8mm to 203.2mm)
diameter round pole

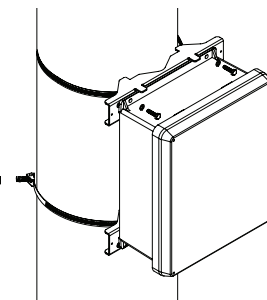
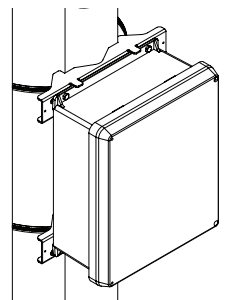
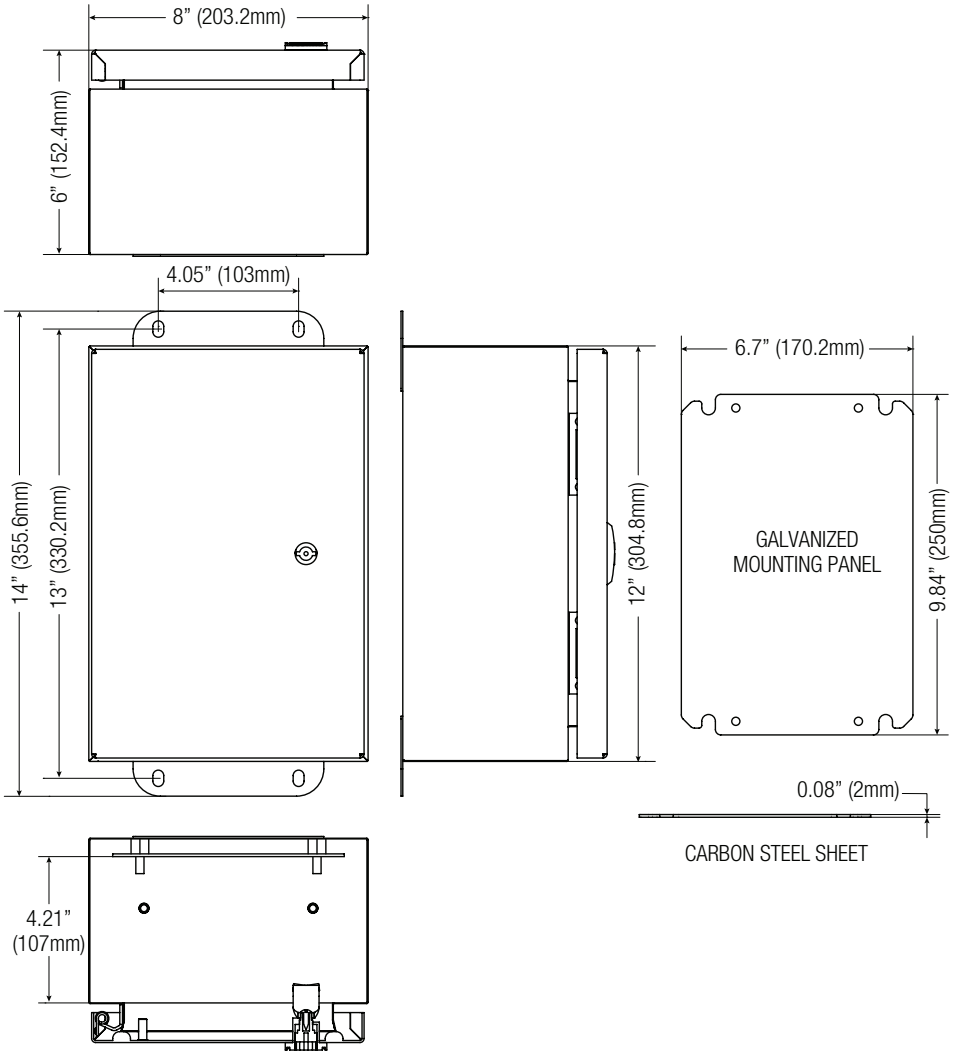


Fig. 8a
5" (127mm) square pole
diameter round pole



Enclosure Dimensions (H x W x D approx.):

12" x 8" x 6" (304.8mm x 203.2mm x 152.4mm)



Altronix is not responsible for any typographical errors.

140 58th Street, Brooklyn, New York 11220 USA | phone: 718-567-8181 | fax: 718-567-9056
website: www.altronix.com | e-mail: info@altronix.com | Lifetime Warranty
IISMP10WP24 A30W

